



Yellow Stripes = Student Parking



White Stripes = Employee Parking



Light Blue Stripes = Visitor Parking



Dark Blue Stripes = Foundation Hall Resident Parking



Purple Stripes = Accessible Parking



Orange Stripes = Adult Basic Education Parking



HS Headstart Drop Off



Accessible Entrance



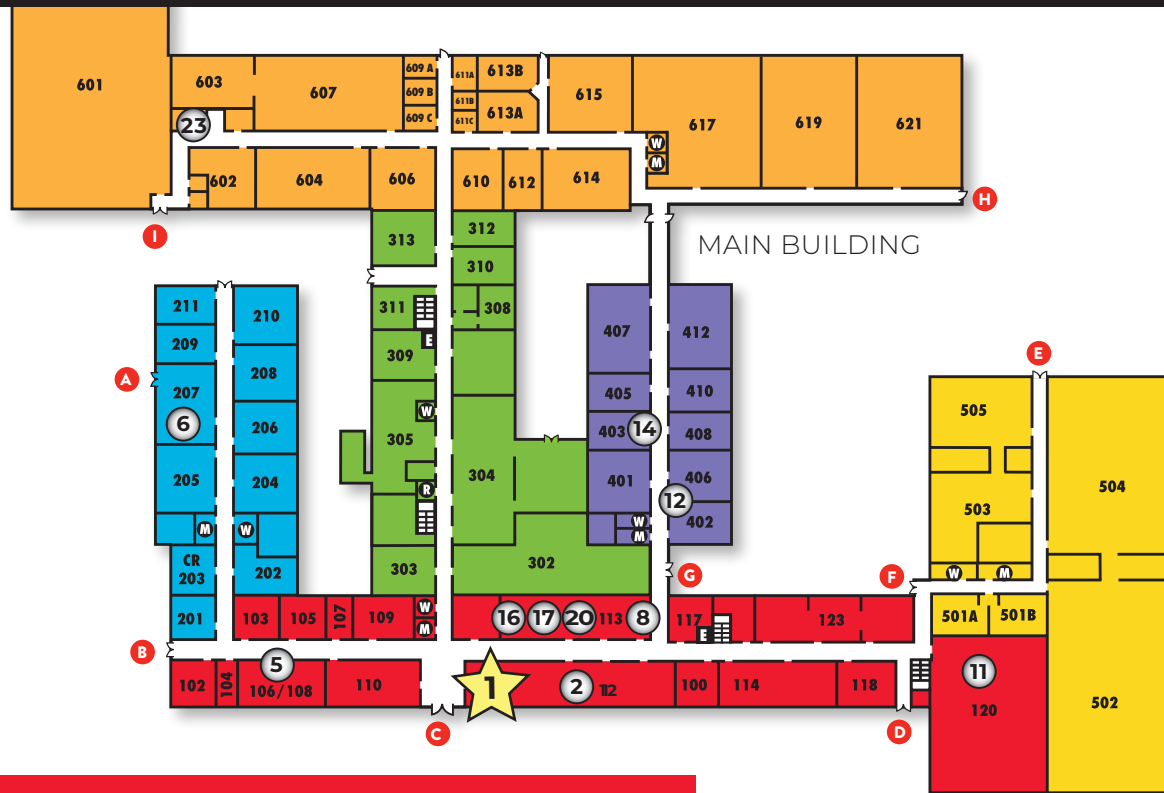
Welcome Center



Entrance Identification

ATCC Parking permits are required and valid only in their designated parking lots and in marked stalls. Parking in a lot other than the one designated on your ATCC permit, outside of a marked stall, in 15-minute/one hour stalls (beyond the allotted time), or in No Parking Zones will result in fines, immobilization, or towing.

ROOM MAP



AREAS OF INTEREST:

- | | |
|--|---|
| 1 WELCOME CENTER | 13 INTERCULTURAL CENTER |
| 2 ADMISSIONS/TESTING/COUNSELING | 14 IT DEPARTMENT |
| 3 ADULT BASIC EDUCATION | 15 LAW ENFORCEMENT GYM |
| 4 AUDITORIUM 743 | 16 PSEO |
| 5 BUSINESS OFFICE | 17 REGISTRAR |
| 6 CUSTOMIZED TRAINING | 18 SCHOLARSHIP OFFICE |
| 7 E-SPORTS ROOM | 19 TACTICAL WAREHOUSE |
| 8 FINANCIAL AID | 20 TRANSFER/ADVISING |
| 9 FOUNDATION OFFICES | 21 LIBRARY |
| 10 GALLERY 300 | 22 VETERANS CENTER |
| 11 GYM | 23 FOOD PANTRY (JENNIE'S CUPBOARD) |
| 12 HEAD START | 24 WEIGHT ROOM |
| | 25 REFLECTION ROOM |

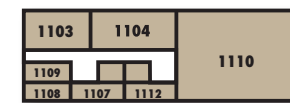


300 WING
2ND FLOOR

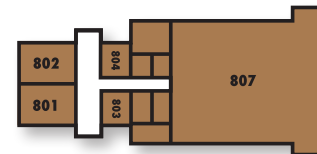


100 WING
2ND FLOOR

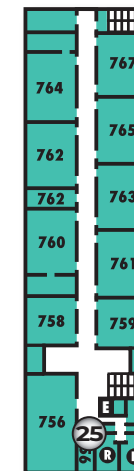
FOUNDATION
HALL



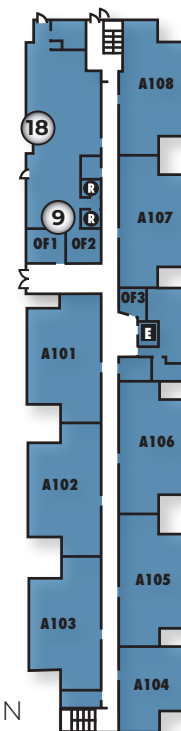
1100 BUILDING



800 BUILDING



700 SOUTH
BUILDING
2ND FLOOR



NORTH 700
BUILDING

SOUTH 700
BUILDING



LAW ENFORCEMENT
TRAINING CENTER